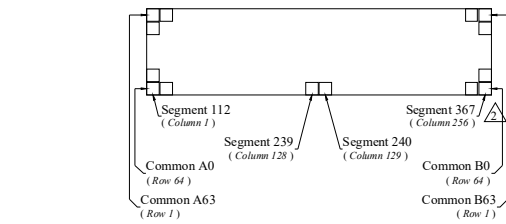
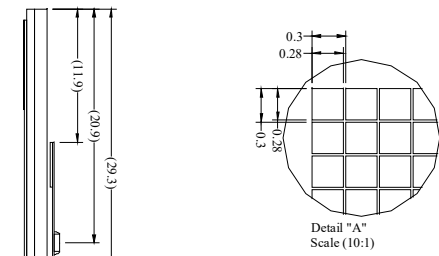
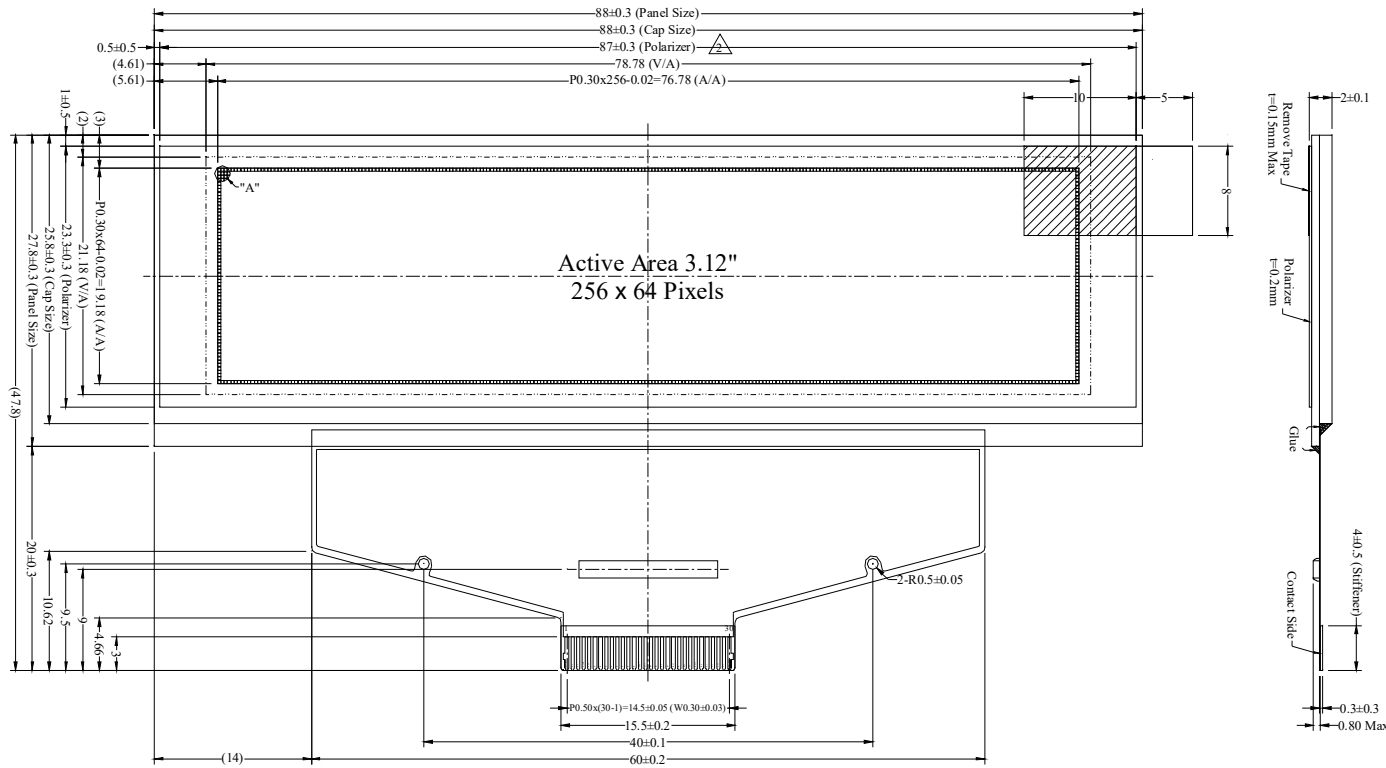


PIN DESCRIPTION

PIN	SYMBOL
1	N.C.(GND)
2	VSS
3	VCC
4	VCOMH
5	VLSS
6	D7
7	D6
8	D5
9	D4
10	D3
11	D2
12	D1
13	D0
14	E/RD#
15	R/W#
16	BS0
17	BS1
18	DC#
19	CS#
20	RES#
21	FR
22	IREF
23	N.C.
24	VDDIO
25	VDD
26	VCI
27	VSL
28	VLSS
29	VCC
30	N.C.(GND)



NOTE:

- COLOR: WHITE
- OPERATING VOLTAGE: VCI=2.8V (TYP.)
- DRIVE DUTY: 1/64
- DRIVER IC: SSD1322
- OPERATING TEMP.: -40°C ~ 85°C
- STORAGE TEMP.: -40°C ~ 90°C
- INTERFACE: 8-BIT 6800/8080 PARALLEL, 3-/4-WIRE SPI
- GENERAL TOLERANCE: ±0.3MM
- ROHS COMPLIANT

Mit MULTI-INNO TECHNOLOGY CO., LTD.

DRAWN BY:	CAROL	2020.11.10		MODULE P/N:
CHECKED BY:	CAROL	2008.08.21	SCALE : 1/1	M125664B0-2
APPROVED BY:			UNIT: mm	DESCRIPTION:
VERSION NO:	01		SHEET NO.: 1/1	OLED MODULE

VER.	REVISED DESCRIPTION	REVISER	DATE
02	MODIFY COLUMN 256 DEFINE AND POLARIZER SIZE.	CAROL	2020.11.10
01	FIRST ISSUE	CAROL	2008.08.21